

Notice: JANBI, CANBI & ITF Examination Rules:

1. Must reach the examination center at least 30 minutes before and be seated in the examination hall 15 minutes before the time of examination. Late entry into the examination hall will not be allowed at any cost.
2. You must produce your "**Bank ID Card**" to sign the examination attendance.
3. JANBI candidates will be allowed to carry normal calculators while CANBI candidates can carry scientific calculators.
4. You are **not supposed to carry your mobile phone into the hall** and if you do have, it must be switched off and deposited with the NBI exam support staff and collected after the examination.
5. Use of mobile in any form inside the examination hall is strictly prohibited.
6. Side talking, copying others work and cheating from any paper or devices shall not be allowed.
7. Candidates found violating any of the rules will disqualify for the exam and be subject to the disciplinary action as has been recommended by Examination committee which could be to the extreme of lifelong ban to one particular certification course or all certification courses of NBI. The Superintendent or the invigilator may ask such candidate to leave the hall and notify to the concerned bank of such violations.
8. You will not be allowed to move out of your seat in the first hour of the examination and permission must be taken from the examination superintendent for urgency.
9. You are to read the questions and answer options in the set of questionnaires provided and have the appropriate answer options marked in the **OMR Sheet** provided.
10. You must be careful in filling up the required details in **OMR sheet** as instructed and handle it with care as no extra **OMR sheet** will be provided in case of any wrong use/ damage of **OMR sheet**.
11. You must use black or blue gel pen to darken the circles in the **OMR sheet**.

All the best for your examinations!

2. MEMBERSHIP NO > BLOCK

Note : JANBI/CANBI membership has 3 – 4 digits as of date. In case of 3 digit membership number like **259**, always write 0 (zero) in the first box of the block as shown here and write the remaining numbers in the other boxes. Then in the column of bubbles below the number in the box find the matching number and darken it with black or blue gel pen as shown.

Membership No.			
0	2	5	9
<input checked="" type="radio"/>	<input type="radio"/>	<input type="radio"/>	<input type="radio"/>
<input type="radio"/>	<input type="radio"/>	<input type="radio"/>	<input type="radio"/>
<input type="radio"/>	<input checked="" type="radio"/>	<input type="radio"/>	<input type="radio"/>
<input type="radio"/>	<input type="radio"/>	<input type="radio"/>	<input type="radio"/>
<input type="radio"/>	<input type="radio"/>	<input checked="" type="radio"/>	<input type="radio"/>
<input type="radio"/>	<input type="radio"/>	<input type="radio"/>	<input type="radio"/>
<input type="radio"/>	<input type="radio"/>	<input type="radio"/>	<input type="radio"/>
<input type="radio"/>	<input type="radio"/>	<input type="radio"/>	<input checked="" type="radio"/>
<input type="radio"/>	<input type="radio"/>	<input type="radio"/>	<input type="radio"/>
<input type="radio"/>	<input type="radio"/>	<input type="radio"/>	<input type="radio"/>
<input type="radio"/>	<input type="radio"/>	<input type="radio"/>	<input type="radio"/>
<input type="radio"/>	<input type="radio"/>	<input type="radio"/>	<input type="radio"/>
<input type="radio"/>	<input type="radio"/>	<input type="radio"/>	<input type="radio"/>

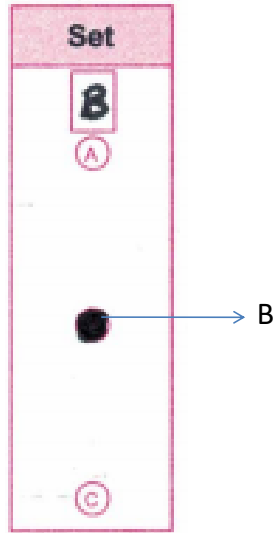
3. PROGRAM BLOCK

Note : Depending on JANBI/CANBI Exam circle the appropriate examination bubble. For example , here for the examination JANBI, the bubble for JANBI has been blackened with black or blue gel pen.

Program	
JANBI	<input checked="" type="radio"/>
CANBI	<input type="radio"/>
OTHERS	<input type="radio"/>

4. SET BLOCK

Note : In the first page of the question set , following the name of the subject, if there is the name of the set mentioned as (Set A) or (Set B) or Set (C). If no set number is mentioned, there is no need to fill in any of the circles here. Here in the illustration, box of SET block, "B" is written and the corresponding bubble below is darkened with black or blue gel pen (as shown here).



5. INSTRUCTION BLOCK

Note : NOTHING TO FILL IN HERE. Just for your reading the instructions to follow.

1. Do not fold answer sheet.
2. Mark your answer by blackening the appropriate bubble against each question.
3. Rough work must not be done on the answer sheet.
4. For each question only one option MUST be marked, no multiple marking will be allowed.
5. Use blue or black gel pen only.

6. ANSWER SHEET NO. BLOCK

Note : NOTHING TO FILL IN HERE. This portion just contains pre-defined sheet number for our official use.

Answer Sheet No.
0024

↓
Pre-defined number

7. ANSWER OPTIONS MARKING BLOCK

Correct way of darkening option. Eg. Q1 & Q2.

Incorrect way of darkening option. Eg. Q 6 and Q 9.

1	A	B	C	D	26	A	B	C	D	51	A	B	C	D	76	A	B	C	D	101	A	B	C	D
2	A	B	C	D	27	A	B	C	D	52	A	B	C	D	77	A	B	C	D	102	A	B	C	D
3	A	B	C	D	28	A	B	C	D	53	A	B	C	D	78	A	B	C	D	103	A	B	C	D
4	A	B	C	D	29	A	B	C	D	54	A	B	C	D	79	A	B	C	D	104	A	B	C	D
5	A	B	C	D	30	A	B	C	D	55	A	B	C	D	80	A	B	C	D	105	A	B	C	D
6	A	B	C	D	31	A	B	C	D	56	A	B	C	D	81	A	B	C	D	106	A	B	C	D
7	A	B	C	D	32	A	B	C	D	57	A	B	C	D	82	A	B	C	D	107	A	B	C	D
8	A	B	C	D	33	A	B	C	D	58	A	B	C	D	83	A	B	C	D	108	A	B	C	D
9	A	B	C	D	34	A	B	C	D	59	A	B	C	D	84	A	B	C	D	109	A	B	C	D
10	A	B	C	D	35	A	B	C	D	60	A	B	C	D	85	A	B	C	D	110	A	B	C	D
11	A	B	C	D	36	A	B	C	D	61	A	B	C	D	86	A	B	C	D	111	A	B	C	D
12	A	B	C	D	37	A	B	C	D	62	A	B	C	D	87	A	B	C	D	112	A	B	C	D
13	A	B	C	D	38	A	B	C	D	63	A	B	C	D	88	A	B	C	D	113	A	B	C	D
14	A	B	C	D	39	A	B	C	D	64	A	B	C	D	89	A	B	C	D	114	A	B	C	D
15	A	B	C	D	40	A	B	C	D	65	A	B	C	D	90	A	B	C	D	115	A	B	C	D
16	A	B	C	D	41	A	B	C	D	66	A	B	C	D	91	A	B	C	D	116	A	B	C	D
17	A	B	C	D	42	A	B	C	D	67	A	B	C	D	92	A	B	C	D	117	A	B	C	D
18	A	B	C	D	43	A	B	C	D	68	A	B	C	D	93	A	B	C	D	118	A	B	C	D
19	A	B	C	D	44	A	B	C	D	69	A	B	C	D	94	A	B	C	D	119	A	B	C	D
20	A	B	C	D	45	A	B	C	D	70	A	B	C	D	95	A	B	C	D	120	A	B	C	D
21	A	B	C	D	46	A	B	C	D	71	A	B	C	D	96	A	B	C	D					
22	A	B	C	D	47	A	B	C	D	72	A	B	C	D	97	A	B	C	D					
23	A	B	C	D	48	A	B	C	D	73	A	B	C	D	98	A	B	C	D					

Note : After reading the questions and identifying the correct option in the question set, you will have to darken the option with black or blue pen for 100 questions of your choice. Must mark only one answer option for each question.