

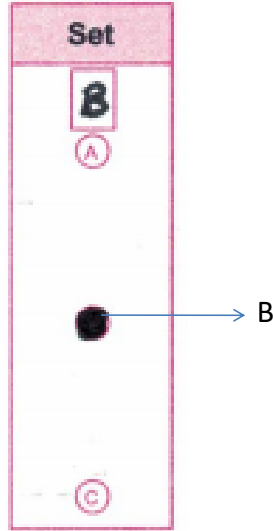
Notice :JANBI and CANBI Examination Rules:

1. Must reach the examination center at least 30 minutes before and be seated in the examination hall 15 minutes before the time of examination. Late entry into the examination hall will not be allowed at any cost.
2. You must produce your "**Bank ID Card**" to sign the examination attendance.
3. JANBI candidates will be allowed to carry normal calculators while CANBI candidates can carry scientific calculators.
4. You are **not supposed to carry your mobile phone into the hall** and if you do have, it must be switched off and deposited with the NBI exam support staff and collected after the examination.
5. Use of mobile in any form inside the examination hall is strictly prohibited.
6. Side talking, copying others work and cheating from any paper or devices shall not be allowed.
7. Candidates found violating any of the rules will disqualify for the exam and be subject to the disciplinary action as has been recommended by Examination committee which could be to the extreme of lifelong ban to one particular certification course or all certification courses of NBI. The Superintendent or the invigilator may ask such candidate to leave the hall and notify to the concerned bank of such violations.
8. You will not be allowed to move out of your seat in the first hour of the examination and permission must be taken from the examination superintendent for urgency.
9. Prior to starting the examination, you must read the Self declaration sheet and sign.
10. You are to read the questions and answer options in the set of questionnaire provided and have the appropriate answer options marked in the **OMR Sheet** provided.
11. You must be careful in filling up the required details in **OMR sheet** as instructed and handle it with care as no extra **OMR sheet** will be provided in case of any wrong use/ damage of **OMR sheet**.
12. You must use black or blue gel pen to darken the circles in the **OMR sheet**.

All the best for your examinations!

4. SET BLOCK

Note : In the first page of the question set , following the name of the subject, if there is the name of the set mentioned as (Set A) or (Set B) or Set (C). If no set number is mentioned, there is no need to fill in any of the circles here. Here in the illustration, box of SET block, "B" is written and the corresponding bubble below is darkened with black or blue gel pen (as shown here).



5. INSTRUCTION BLOCK

Note : NOTHING TO FILL IN HERE. Just for your reading the instructions to follow.

1. Do not fold answer sheet.
2. Mark your answer by blackening the appropriate bubble against each question.
3. Rough work must not be done on the answer sheet.
4. For each question only one option MUST be marked, no multiple marking will be allowed.
5. Use blue or black gel pen only.

6. ANSWER SHEET NO. BLOCK

Note : NOTHING TO FILL IN HERE. This portion just contains pre-defined sheet number for our official use.

Answer Sheet No.
0024

↓
Pre-defined number

7. ANSWER OPTIONS MARKING BLOCK

Correct way of darkening option. Eg. Q1 & Q2.

Incorrect way of darkening option. Eg. Q 6 and Q 9.

1	A	B	C	D
2	A	B	C	D
3	A	B	C	D
4	A	B	C	D
5	A	B	C	D
6	A	B	C	D
7	A	B	C	D
8	A	B	C	D
9	A	B	C	D
10	A	B	C	D
11	A	B	C	D
12	A	B	C	D
13	A	B	C	D
14	A	B	C	D
15	A	B	C	D
16	A	B	C	D
17	A	B	C	D
18	A	B	C	D
19	A	B	C	D
20	A	B	C	D
21	A	B	C	D
22	A	B	C	D
23	A	B	C	D
24	A	B	C	D
25	A	B	C	D
26	A	B	C	D
27	A	B	C	D
28	A	B	C	D
29	A	B	C	D
30	A	B	C	D
31	A	B	C	D
32	A	B	C	D
33	A	B	C	D
34	A	B	C	D
35	A	B	C	D
36	A	B	C	D
37	A	B	C	D
38	A	B	C	D
39	A	B	C	D
40	A	B	C	D
41	A	B	C	D
42	A	B	C	D
43	A	B	C	D
44	A	B	C	D
45	A	B	C	D
46	A	B	C	D
47	A	B	C	D
48	A	B	C	D
49	A	B	C	D
50	A	B	C	D
51	A	B	C	D
52	A	B	C	D
53	A	B	C	D
54	A	B	C	D
55	A	B	C	D
56	A	B	C	D
57	A	B	C	D
58	A	B	C	D
59	A	B	C	D
60	A	B	C	D
61	A	B	C	D
62	A	B	C	D
63	A	B	C	D
64	A	B	C	D
65	A	B	C	D
66	A	B	C	D
67	A	B	C	D
68	A	B	C	D
69	A	B	C	D
70	A	B	C	D
71	A	B	C	D
72	A	B	C	D
73	A	B	C	D
74	A	B	C	D
75	A	B	C	D
76	A	B	C	D
77	A	B	C	D
78	A	B	C	D
79	A	B	C	D
80	A	B	C	D
81	A	B	C	D
82	A	B	C	D
83	A	B	C	D
84	A	B	C	D
85	A	B	C	D
86	A	B	C	D
87	A	B	C	D
88	A	B	C	D
89	A	B	C	D
90	A	B	C	D
91	A	B	C	D
92	A	B	C	D
93	A	B	C	D
94	A	B	C	D
95	A	B	C	D
96	A	B	C	D
97	A	B	C	D
98	A	B	C	D
99	A	B	C	D
100	A	B	C	D
101	A	B	C	D
102	A	B	C	D
103	A	B	C	D
104	A	B	C	D
105	A	B	C	D
106	A	B	C	D
107	A	B	C	D
108	A	B	C	D
109	A	B	C	D
110	A	B	C	D
111	A	B	C	D
112	A	B	C	D
113	A	B	C	D
114	A	B	C	D
115	A	B	C	D
116	A	B	C	D
117	A	B	C	D
118	A	B	C	D
119	A	B	C	D
120	A	B	C	D

Note : After reading the questions and identifying the correct option in the question set, you will have to darken the option with black or blue pen for 100 questions of your choice. Must mark only one answer option for each question.

EXAMINATION RULES: INTERNATIONAL TRADE FINANCE (ITF)

To give examinations you **must self arrange** for a laptop or desktop with minimum of following pre-requisites. Normally, these requisites are already available in your Laptops / Desktops , however you just need to check and ensure.

Technical requirements

Parameter	Minimum requirements
Web browser	Latest version of Chrome and .Net Version 4.5.2
Operating system	Windows 7 and above
Processor	Min 2 cores, 4 threads, > 2.2 GHz
RAM	2 GB or above
Web camera	640x480, 15 fps
Microphone	Any Suitable
Screen resolution	1024 x 768 and Above
Network response	Not more than 1000 ms
Network ports and protocols	443/tcp, 3478/tcp, 3478/udp
Network bandwidth	Min 1 Mbps
Antivirus	Should be on disabled mode during exam time
Browser	Google Chrome Latest Version

1. You must use a well functioning laptop or Desktop that meets the specifications informed (listed above) & **self ensure you have uninterrupted supply of power and internet connections for at least 2-2.5 hours.**
2. Prior to logging into the examination platform, you will be required to login into ZOOM via your mobile phone and follow instructions of the NBI proctors.
3. The mobile should be placed in such a way that it captures your side profile along with the computer/laptop table throughout the examination time.

4. The room where you sit for the examination should be preferably near the wifi router, must be free from noise/sound and must have proper lighting to recognize/capture your image by the camera.
5. No other person should be allowed into your room and you must not move out of your seat during the time examination as it will trigger Artificial Intelligence to send you warnings.
6. Clear the browser cache before you login to the examination platform.
7. User ID and Password to access the examination platform will be provided via email just before the examination.
8. You must login 10 minutes before the time of the examination and login access will be denied by the system if late.
9. Upon login, please allow access to all that is prompted by the examination platform.
10. You are not supposed to consult any book, internet or any material during the examinations.
11. Taking photos or recording videos and sharing it with others are strictly prohibited.
12. Do not use headphones, noise cancellation devices, Bluetooth devices during the examination and if used, it will be treated as malpractice.
13. You must not indulge in any activity of switching off your device or internet connectivity during the examinations.
14. NBI proctors shall keep record of all the anomalies and may take disciplinary action without assigning any reason whatsoever if found guilty.
15. Depending upon the severity of the malpractices, NBI officials proctoring the examination reserves right to take disciplinary actions from detaining the examinee to disqualifying the examination.
16. If there be any such disturbance/issue owing to the failure of your device/connectivity which shall prevent you from continuing your exam, then in such occurrence/s NBI shall not be liable to avail re-examination. The marks in such cases will be evaluated from the questions attempted prior to the disturbance.

All the best for your examination.